



# RNF113B rabbit pAb

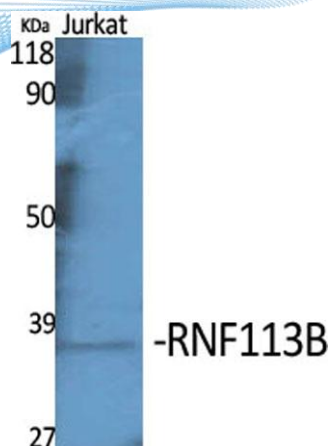
Cat No.:ES3385

For research use only

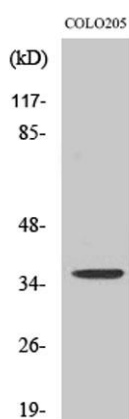
## Overview

<b>Product Name</b>	RNF113B rabbit pAb
<b>Host species</b>	Rabbit
<b>Applications</b>	WB;IHC
<b>Species Cross-Reactivity</b>	Human;Rat;Mouse;
<b>Recommended dilutions</b>	WB 1:500-2000;IHC-p 1:50-300
<b>Immunogen</b>	Synthesized peptide derived from the Internal region of human RNF113B.
<b>Specificity</b>	RNF113B Polyclonal Antibody detects endogenous levels of RNF113B protein.
<b>Formulation</b>	Liquid in PBS containing 50% glycerol, 0.5% BSA and 0.02% sodium azide.
<b>Storage</b>	Store at -20°C. Avoid repeated freeze-thaw cycles.
<b>Protein Name</b>	RING finger protein 113B
<b>Gene Name</b>	RNF113B
<b>Cellular localization</b>	U2-type spliceosomal complex,
<b>Purification</b>	The antibody was affinity-purified from rabbit antiserum by affinity-chromatography using epitope-specific immunogen.
<b>Clonality</b>	Polyclonal
<b>Concentration</b>	1 mg/ml
<b>Observed band</b>	36kD
<b>Human Gene ID</b>	140432
<b>Human Swiss-Prot Number</b>	Q8IZP6
<b>Alternative Names</b>	RNF113B; RNF161; ZNF183L1; RING finger protein 113B; Zinc finger protein 183-like 1
<b>Background</b>	similarity:Contains 1 C3H1-type zinc finger.,similarity:Contains 1 RING-type zinc finger.,

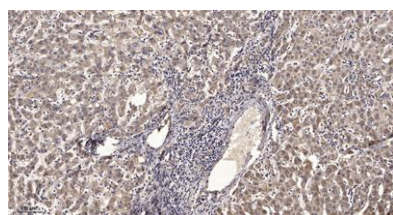




Western Blot analysis of various cells using RNF113B  
Polyclonal Antibody



Western Blot analysis of 293 cells using RNF113B  
Polyclonal Antibody



Immunohistochemical analysis of paraffin-embedded human liver cancer. 1, Antibody was diluted at 1:200(4° overnight). 2, Tris-EDTA,pH9.0 was used for antigen retrieval. 3,Secondary antibody was diluted at 1:200(room temperature, 45min).

