



Ephrin-B1/2 rabbit pAb

Cat No.:ES2281

For research use only

Overview

| | |
|---------------------------------|--|
| Product Name | Ephrin-B1/2 rabbit pAb |
| Host species | Rabbit |
| Applications | WB;IHC;IF;ELISA |
| Species Cross-Reactivity | Human;Mouse;Rat |
| Recommended dilutions | Western Blot: 1/500 - 1/2000. Immunohistochemistry: 1/100 - 1/300. ELISA: 1/40000. Not yet tested in other applications. |
| Immunogen | The antiserum was produced against synthesized peptide derived from human EFNB1/2. AA range:284-333 |
| Specificity | Ephrin-B1/2 Polyclonal Antibody detects endogenous levels of Ephrin-B1/2 protein. |
| Formulation | Liquid in PBS containing 50% glycerol, 0.5% BSA and 0.02% sodium azide. |
| Storage | Store at -20°C. Avoid repeated freeze-thaw cycles. |
| Protein Name | Ephrin-B1/2 |
| Gene Name | EFNB1/EFNB2 |
| Cellular localization | Cell membrane ; Single-pass type I membrane protein . Membrane raft . May recruit GRIP1 and GRIP2 to membrane raft domains. . ; [Ephrin-B1 C-terminal fragment]: Cell membrane ; Single-pass type I membrane protein . ; [Ephrin-B1 intracellular domain]: Nucleus . Colocalizes with ZHX2 in the nucleus. . |
| Purification | The antibody was affinity-purified from rabbit antiserum by affinity-chromatography using epitope-specific immunogen. |
| Clonality | Polyclonal |
| Concentration | 1 mg/ml |
| Observed band | 59kD |
| Human Gene ID | 1947/1948 |
| Human Swiss-Prot Number | P98172/P52799 |
| Alternative Names | EFNB1; EFL3; EPLG2; LERK2; Ephrin-B1; EFL-3; ELK |



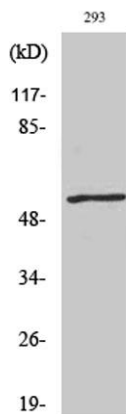
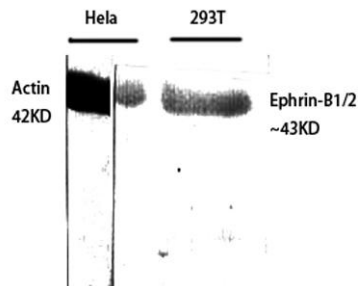


Background

ligand; ELK-L; EPH-related receptor tyrosine kinase ligand 2; LERK-2; EFNB2; EPLG5; HTKL; LERK5; Ephrin-B2; EPH-related receptor tyrosine kinase ligand 5; LERK-5; HTK ligand; HTK-L

The protein encoded by this gene is a type I membrane protein and a ligand of Eph-related receptor tyrosine kinases. It may play a role in cell adhesion and function in the development or maintenance of the nervous system. [provided by RefSeq, Jul 2008],

Western Blot analysis of various cells using Ephrin-B1/2 Polyclonal Antibody diluted at 1:500

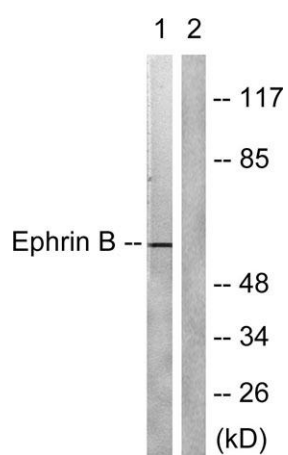
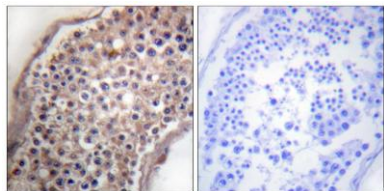


Western Blot analysis of 293 cells using Ephrin-B1/2 Polyclonal Antibody diluted at 1:500





Immunohistochemistry analysis of paraffin-embedded human testis tissue, using EFNB1/2 Antibody. The picture on the right is blocked with the synthesized peptide.



Western blot analysis of lysates from 293 cells, treated with EGF 200ng/ml 5', using EFNB1/2 Antibody. The lane on the right is blocked with the synthesized peptide.

